

# The Worthington Circle

## Harris Manchester's Legacy Society

### Gifts for future generations

Since its earliest days, the College has been the beneficiary of visionary donors who have chosen to continue their support after their lifetimes.

These gifts have provided scholarships, purchased books for the Library, refurbished meeting and tutorial rooms and purchased IT equipment for the Chapel and Hall, and so much more.



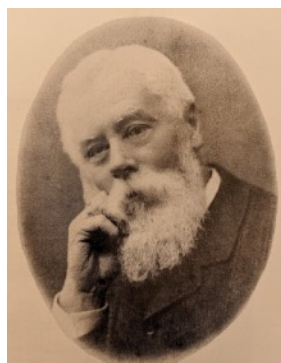
The lives of present and past Harris Manchester students have been positively touched by the generosity of alumni and friends who have supported the College through a gift in their Will. Legacy commitments to Harris Manchester ensure its vitality and create a firm foundation for the education of future generations of mature students at Oxford.

This pledge does not commit you in any way, but is a statement of your present intentions. and is strictly confidential.

### One man's legacy

The Worthington Circle recognises, celebrates, and thanks all those who have committed to leaving a legacy gift to Harris Manchester College, University of Oxford.

Named in honour of the social reformer and architect, Thomas Worthington, who along with his son Percy designed and built the main college quad between 1889 and 1893, this legacy circle ensures that other visionary benefactors are given the opportunity to help build a sustainable and strong future for Harris Manchester College.



### How to become a member

As you think about becoming a member of the Worthington Circle, we encourage you to share your thinking with us. Your legacy can serve as a reflection of your values, a testament to success, or an inspirational message. Some donors even choose to commemorate the life and times of a loved one, perhaps someone to whom they feel they owe their own achievements, whether a relative, cherished friend, inspirational leader or respected thinker.

Harris Manchester College wishes to recognise and celebrate the lives of its legacy donors and those they care about, and we would be delighted to discuss named recognition for any substantial bequest gifts.



### Types of gift

There are two main ways to join the Worthington Circle:

1. By making a **Pecuniary** (or specific) bequest of money or property,
2. By making a **Residuary** bequest of the remainder of your estate, or proportion of the remainder of the estate, after specific bequests have been distributed.

### Directing your gift

Worthington Circle members, like all donors to the College, are free to direct gifts to the area of their choice. It may be helpful to consider the following areas for support:

- **Principal's Discretionary Fund** (where the need is greatest)
- **Teaching & Research Fund**
- **Student Support & Welfare Fund**
- **Estates, Culture, and Heritage Fund**



## The Worthington Circle

### How to include the College in your Will

If you would like to leave a gift in your Will to Harris Manchester College, please use the following wording:

*'I give to the Principal and Fellows of the Manchester Academy and Harris College in the University of Oxford (Charity number: 1143086) the sum of £[insert figure] pounds and I declare that the receipt of the Bursar or other proper Officer for the time being of*

If you would like to be more specific about how your gift is used, then please add the following wording:

*'I express the wish, without creating any trust or imposing any other legally-binding obligation, that... [e.g. preference be given to Student Support & Welfare Fund]'*

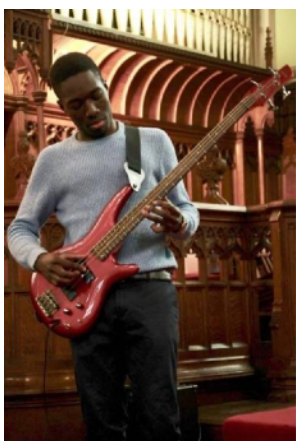
### Letting the College know

When you inform us that you have included Harris Manchester College in your Will, we encourage you to provide some form of documentation of your intentions, so we can direct your gift appropriately. **Relevant**



**documentation** could include an extract from your Will, or a signed letter setting out your intentions. All such documentation will be stored securely and treated in the strictest confidence unless otherwise directed.

**We strongly recommend that you consult a legal adviser when making or changing your Will.**



Informing us that you have remembered Harris Manchester College in your Will does not commit you in any way. Importantly, it gives us the opportunity to thank you personally, to invite you to special donor events and to ensure that you are kept up to date with College developments.

To speak with a member of the Development Office in confidence, please contact [alumni@hmc.ox.ac.uk](mailto:alumni@hmc.ox.ac.uk).

### Inheritance Tax

Harris Manchester College is a registered charity (number: 1143086). This means that the value of any gift you make to the College in your Will is deducted from your estate before it is assessed for Inheritance Tax (currently 40% in the UK), which reduces the tax liability.

### Deed of Variation

A Deed of Variation can be used if you are a beneficiary of a Will and would prefer to reduce Inheritance Tax liabilities following the testator's death by making a charitable donation. To find out more about Deeds of Variation, please contact your legal adviser.

### Planned Giving

If you are a US taxpayer, Oxford Planned Giving offers a number of tax-efficient ways to make a bequest to the College. More information can be found at [oxfordna.org/giving/planned-giving](https://oxfordna.org/giving/planned-giving).

**Thank you for considering membership of Harris Manchester College's Worthington Circle through a gift in your Will.**