

Your Guide to Sub-fusc



**Harris
Manchester
College**
UNIVERSITY OF OXFORD

What is Sub-fusc?

Sub-fusc is the clothing worn under your academic gown.

It is gender neutral and consists of:

a plain white shirt or blouse with white buttons

a plain black or dark grey suit **or** skirt

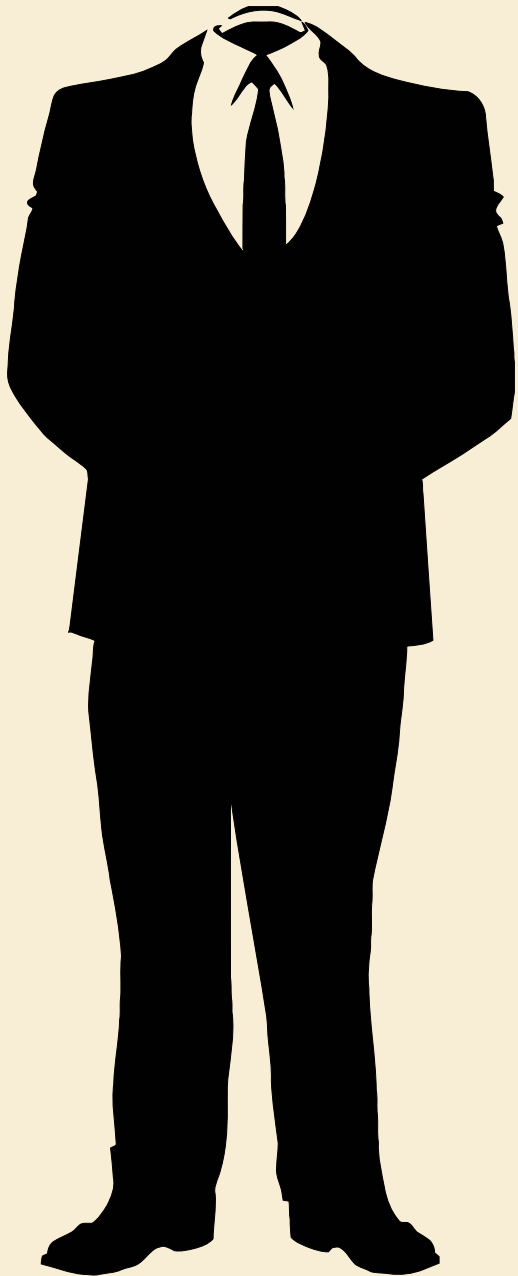
plain black socks **or** tights

plain black shoes

a black or white bowtie **or** a plain black full length tie **or** a black ribbon

Cultural dress is not accepted in lieu of sub-fusc.

Suits



Plain

Black, Charcoal Grey, or
Very Dark Blue

Full length Trousers

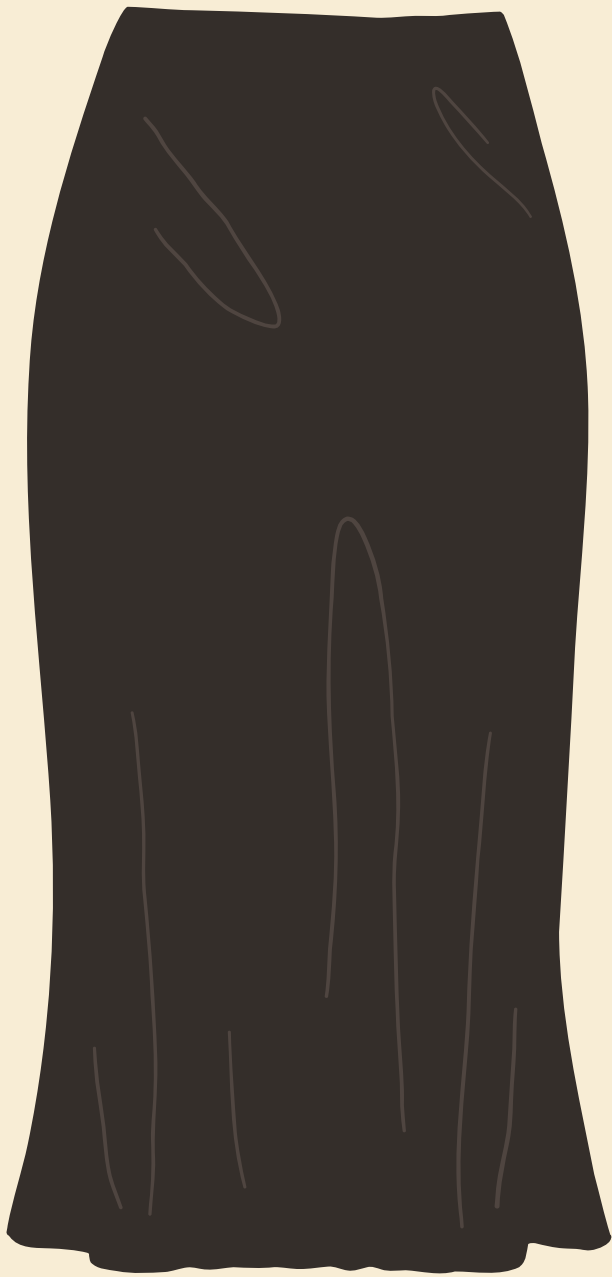


Patterns, including
Pinstripes

Any colour other than
Black, Charcoal Grey or
Very Dark Blue

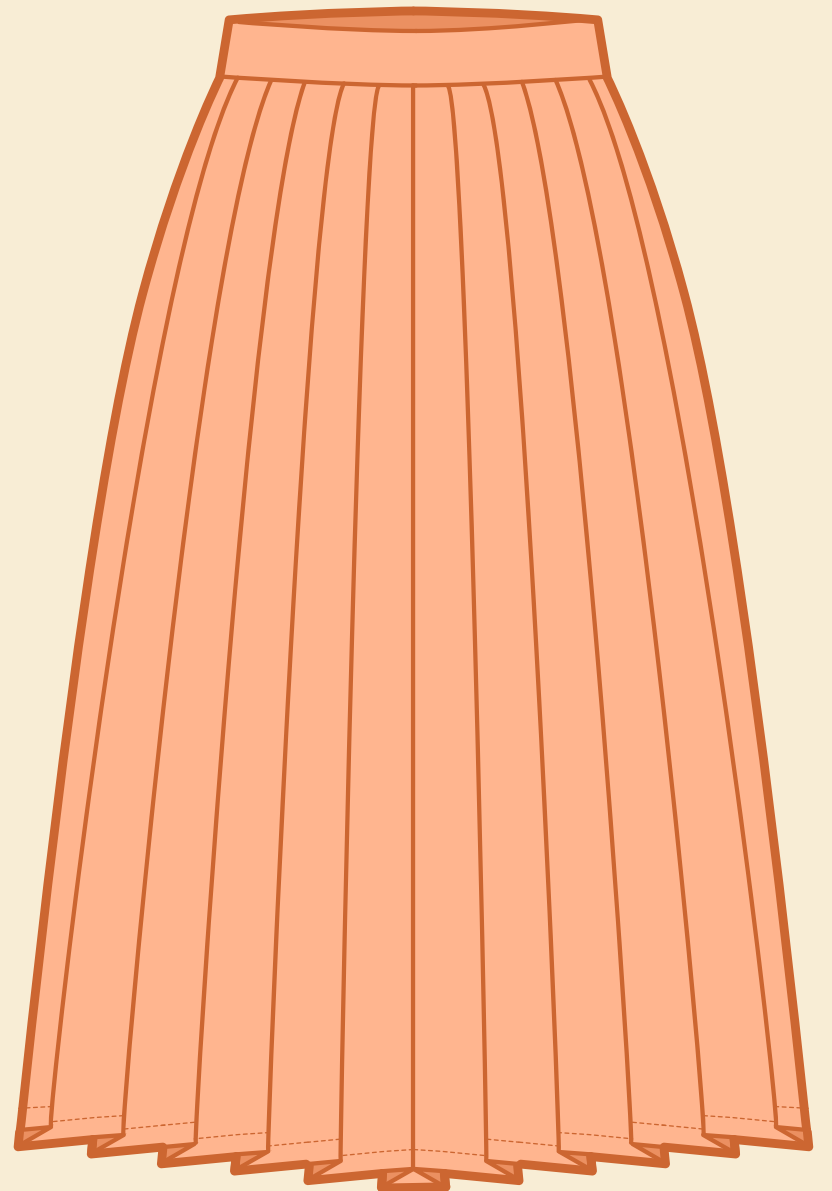
Short Trousers

Skirts



Plain

Black, Charcoal Grey, or
Very Dark Blue



Patterns, including
Pinstripes

Any colour other than
Black, Charcoal Grey or
Very Dark Blue

Shirts & Blouses



White

Full-length Sleeves

White Buttons

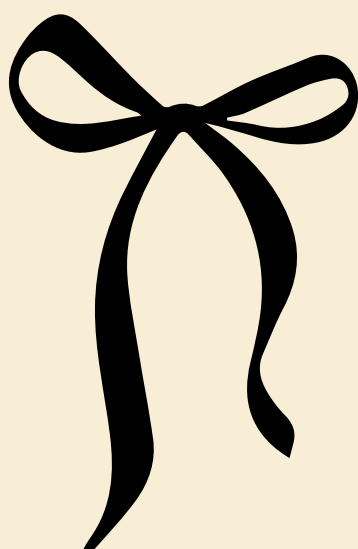
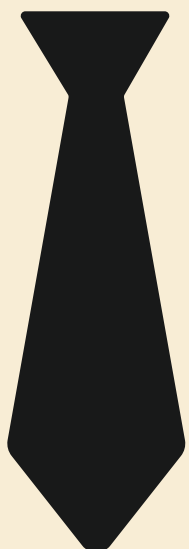
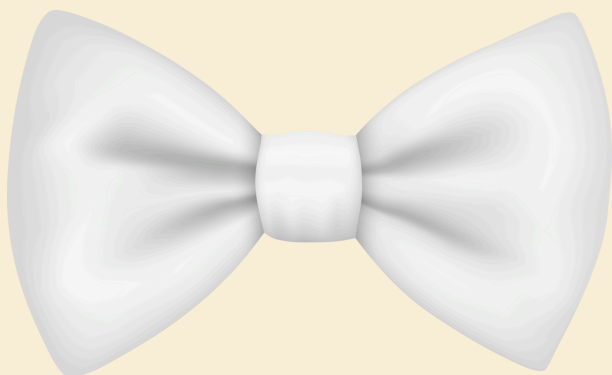
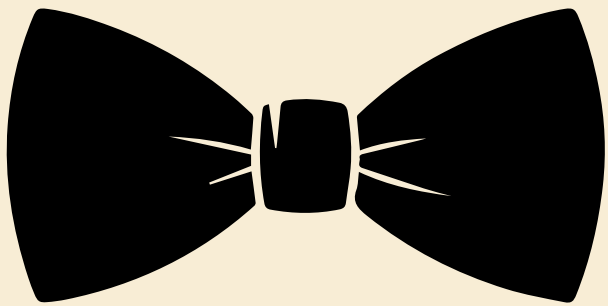


Patterns or Textures

Any Colour other than
White

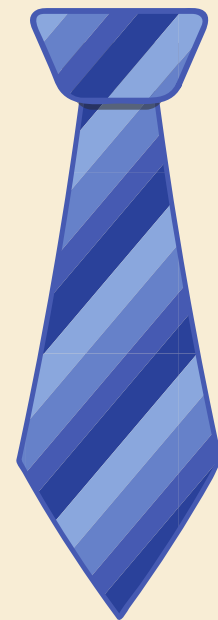
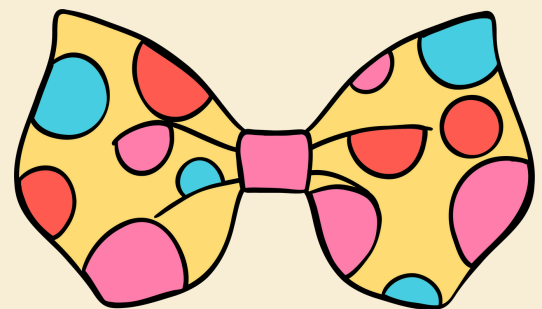
Short Sleeves

Ties & Bowties



Plain

Black or White Bow Tie
or
Black Full-Length Tie
or
Black Ribbon



Patterns

Colours Other Than Black
or White

Socks & Tights



Plain

Patterns

Black Socks or Tights

Black with Other Colours

Must Cover the Ankle
Entirely

Colours Other Than Black

Shoes



Plain

Black

Closed Toe and Back

No Skin Showing (Must be covered by Socks or Tights)

Dark Sole



Patterns or Embellishments

Black with Other Colours

Colours Other Than Black

Trainers

Open Toe and/or Back

Light or Colourful Soles

Other



If you wear a head dress / scarf for religious reasons, a black scarf should be worn.

Ministers of religion may wear clerical dress, with a gown over, when attending ceremonies.

Members of the armed forces may wear service dress under their gown, in place of sub fusc. (This is only applicable to members of The British Armed Forces in the UK. Uniform caps should be removed when indoors.)



Head dress / scarf in any colour other than black.

When wearing sub-fusc, your clothing must not leave any part of your legs, ankles, or feet uncovered.



Harris Manchester College

UNIVERSITY OF OXFORD